

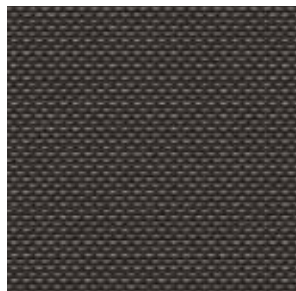
LAURA



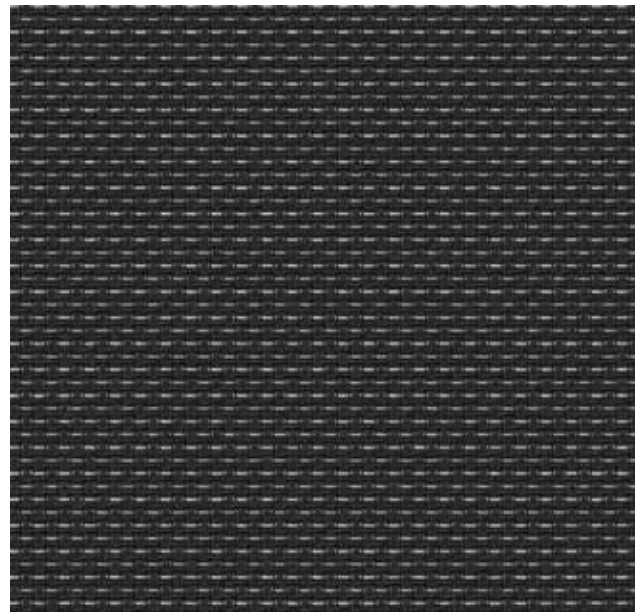
3253005 - 3054



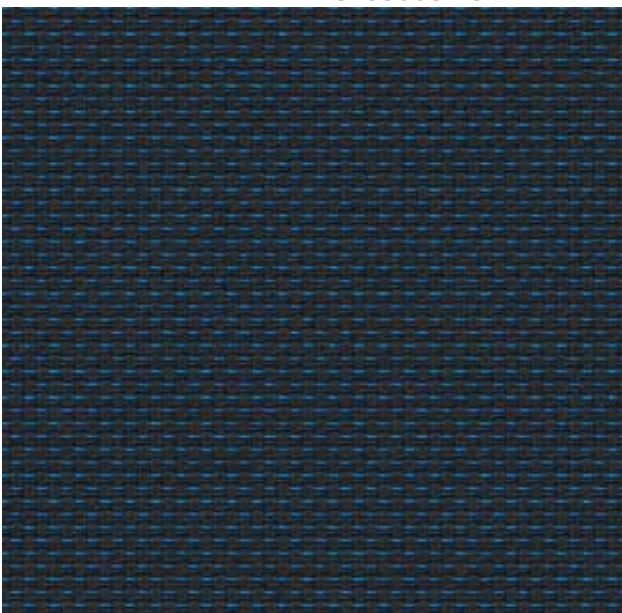
3253005 - 3097



3253005 - 3122



3253005 - 3313



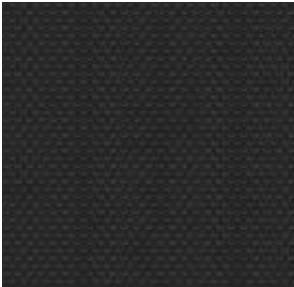
3253005 - 3380



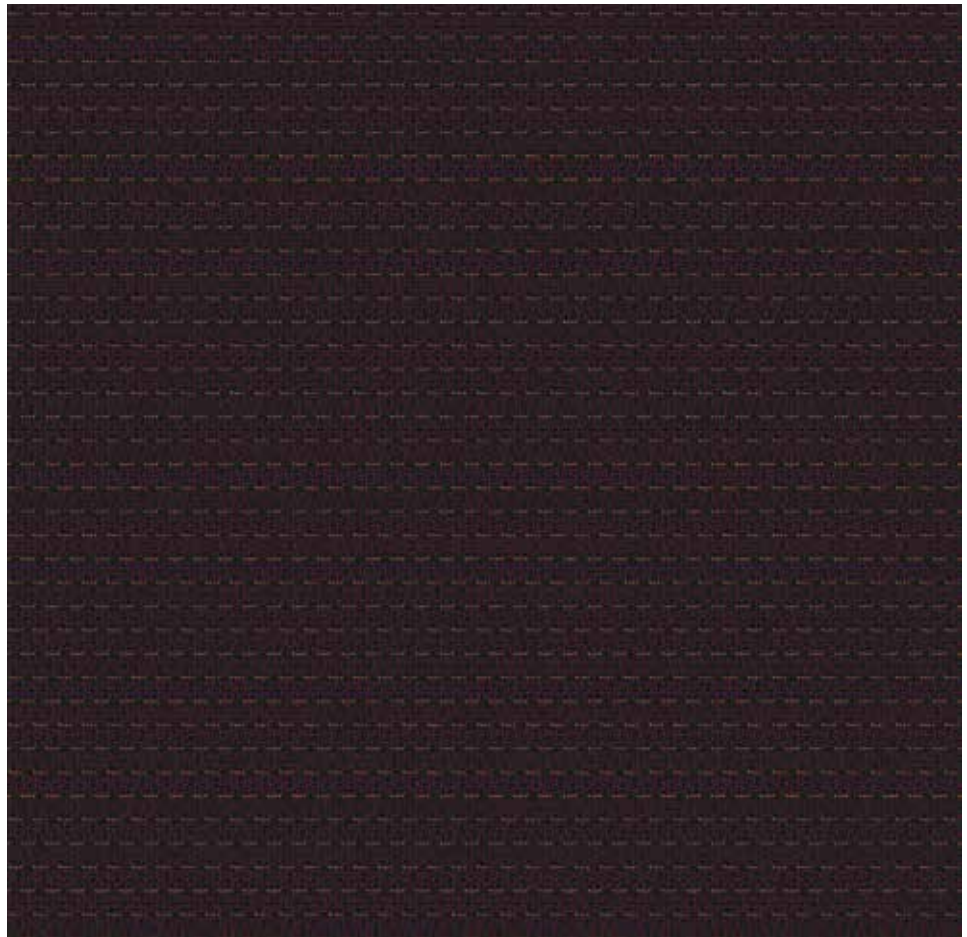
3253005 - 3389



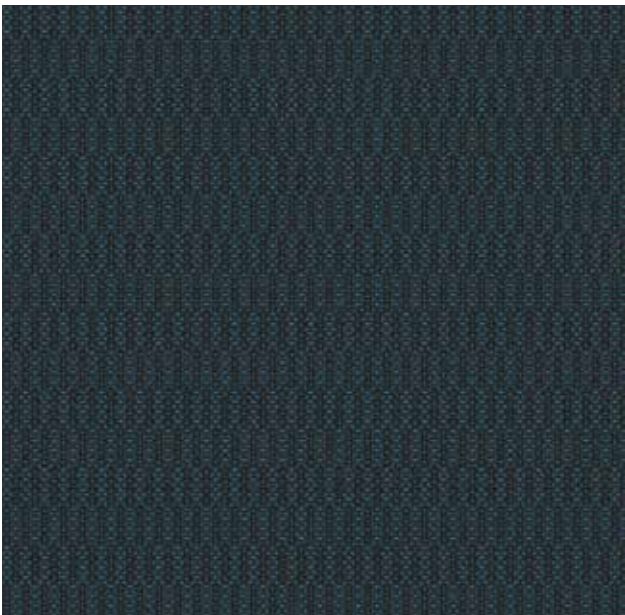
3252105 - 3210



3252105 - 3801



3252105 - 3554



3253105 - 3889



3253105 - 3320



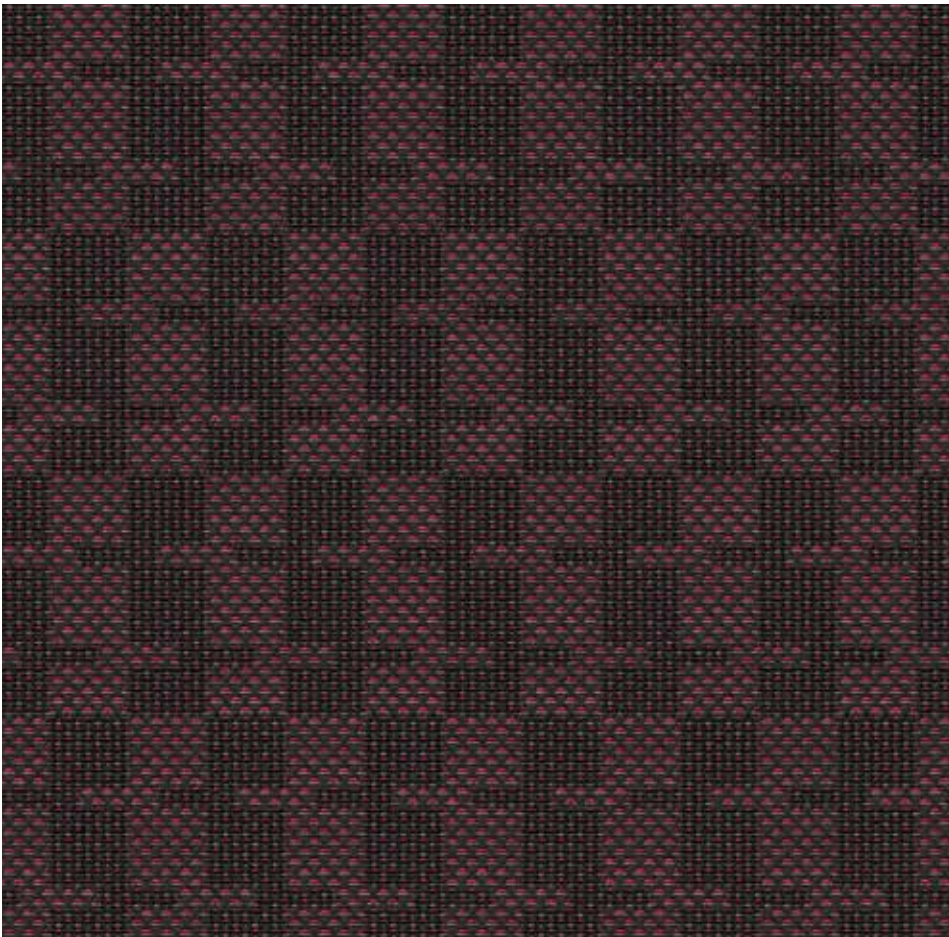
3253105 - 3506



3253105 - 3636



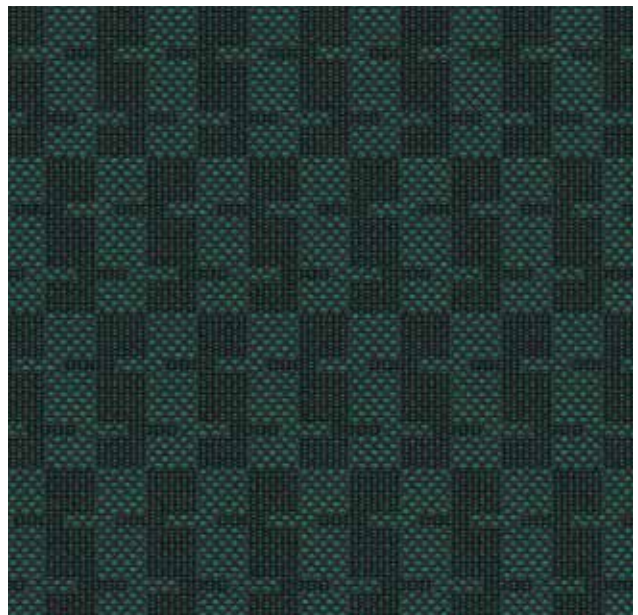
3253105 - 3021



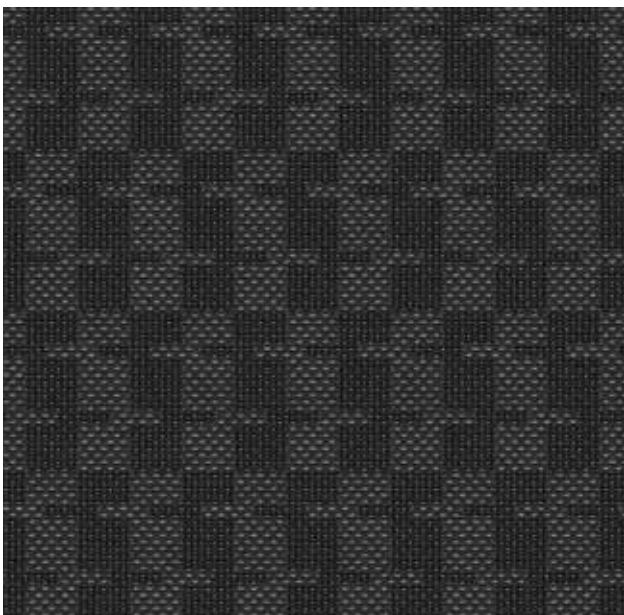
3253205 - 3015



3253205 - 3021



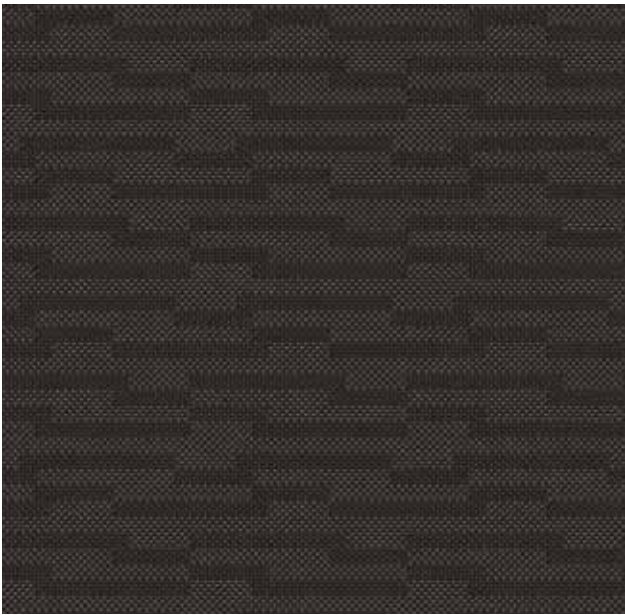
3253205 - 3069



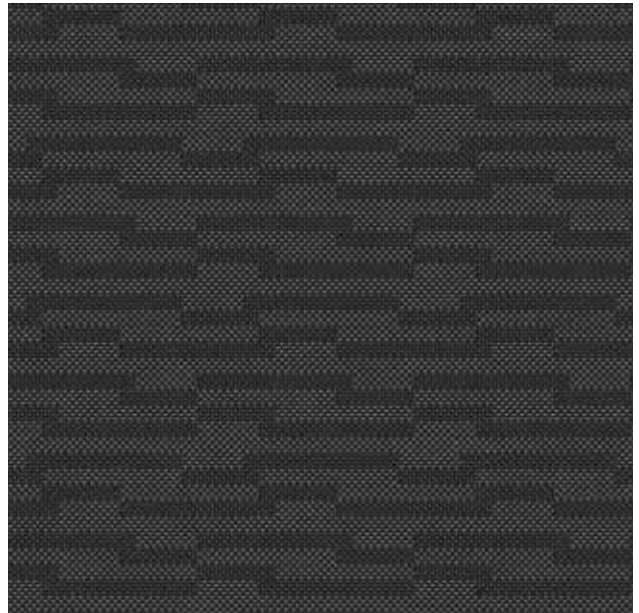
3253205 - 3363



3253205 - 3885



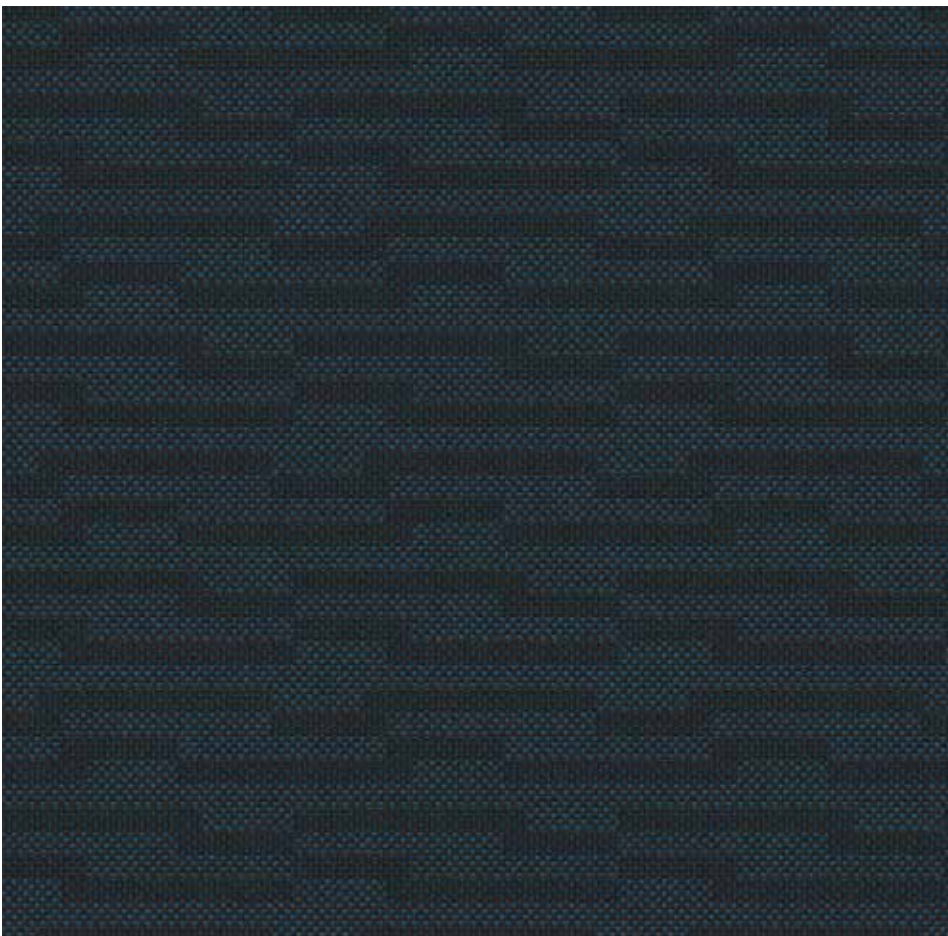
3253305 - 3022



3253305 - 3360



3253305 - 3530



3253305 - 3886

**Technische Daten: Laura Z**

Material/Nutzschicht: Polyester

Breite: 153 cm

Scheuertouren

(DIN EN ISO 12947-2):

mind. 50.000 Touren

Heißlichtechtheit

(DIN EN ISO 105-B06):

Note 7 (theor. Höchstwert = 8).

Brandprüfung gemäß der neuen

ECE Regelung Nr. 118:03.

Haben Sie Fragen zur neuen ECE Regelung Nr. 118:03? Wir helfen gerne weiter.

Auf Wunsch auch mit unserer **Anti-Schmutz-Ausrüstung (ASA)** lieferbar.

Mögliche Farbabweichungen in den Abbildungen sind drucktechnisch bedingt. Bitte fordern Sie bei Bedarf Original-Stoffmuster an.

Technical information: Laura Z

Material/Pile: Polyester

Width: 153 cm

Abrasion resistance

(DIN EN ISO 12947-2):

min. 50.000 rubs

Light-fastness

(DIN EN ISO 105-B06):

value 7 (theor. highest value = 8).

Flammability test according to the

new ECE regulation No. 118:03.

Do you have any questions about the new ECE regulation No. 118:03? If you have any further questions please do not hesitate to contact us.

Upon request with special **Anti-Soil treatment (ASA)**.

Due to the printing process colours might differ slightly. On request we gladly will supply fabric samples.

Données techniques: Laura Z

Matériau/poil: polyester

Largeur: 153 cm

Résistance à l'abrasion

(DIN EN ISO 12947-2):

au moins 50.000 tours

Résistance à l'exposition intensive

à la lumière (DIN EN ISO 105-B06):

noté 7 (valeur maximale théorique = 8).

L'épreuve du feu selon le

nouveau règlement ECE n° 118:03.

Avez-vous des questions concernant le nouveau règlement ECE n° 118:03? Nous serons heureux de vous aider.

Sur demande, nos tissus vous sont livrés avec protection **antitaches ASA**.

Pour des raisons d'impression, les couleurs dans les illustrations peuvent diverger légèrement du ton original. Demandez nous un échantillon de tissu original en cas de besoin.

E. Schoepf GmbH
Rathausstraße 18 · DE-95236 Stammbach
Tel.: +49 (0) 92 56 80 0 · Fax: +49 (0) 92 56 80 72
info@e-schoepf.de · www.e-schoepf.de