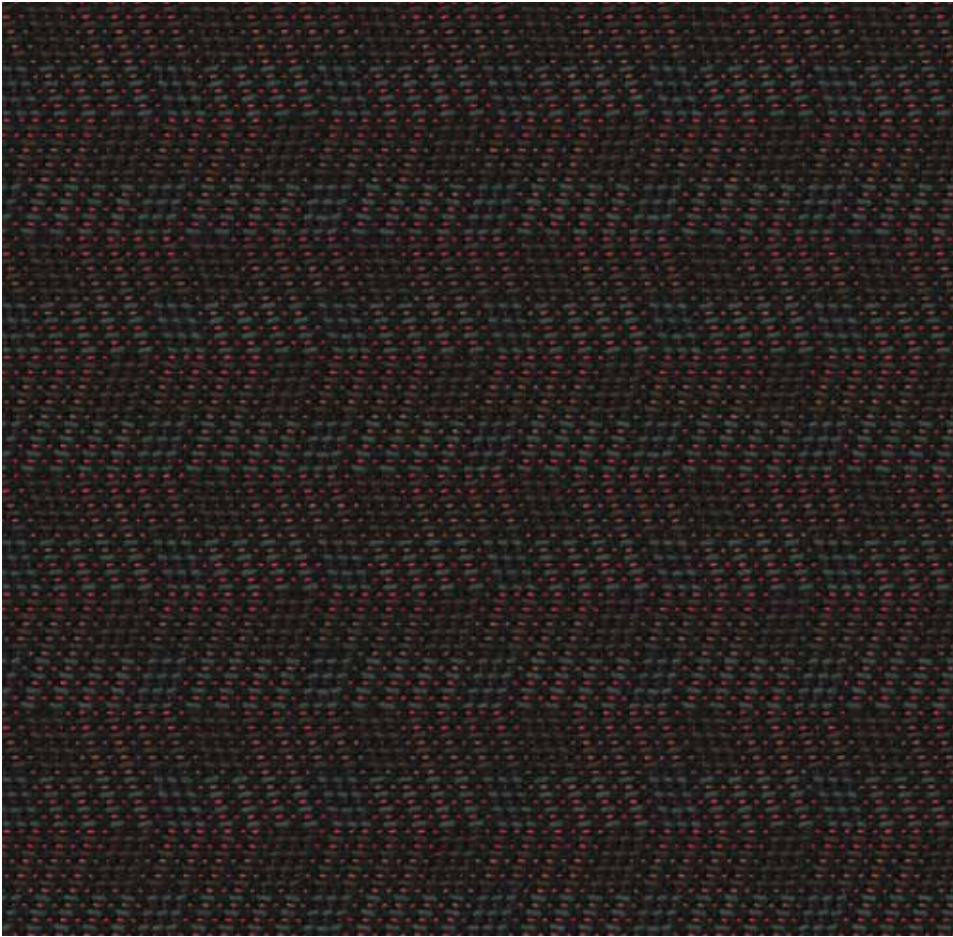


Schoepf
Shaping the Future of Fabrics



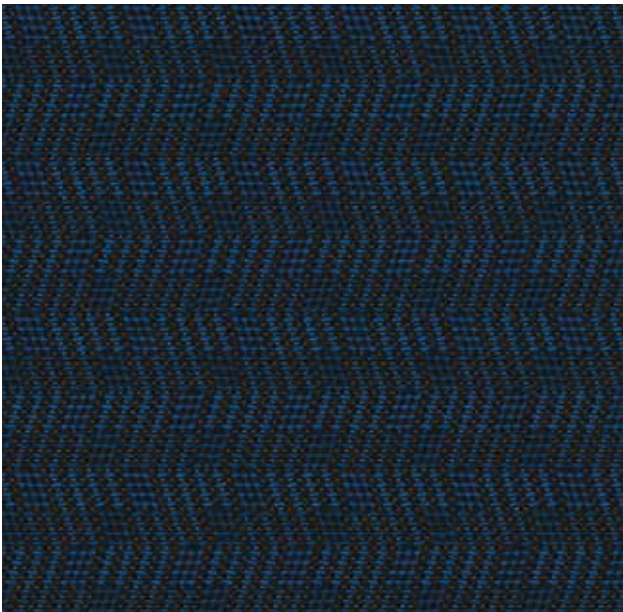
LEANDER



3249905 - 1154



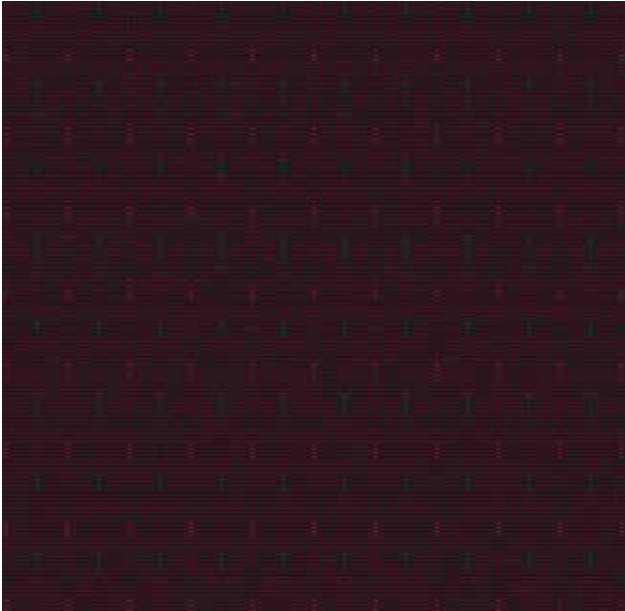
3249905 - 3189



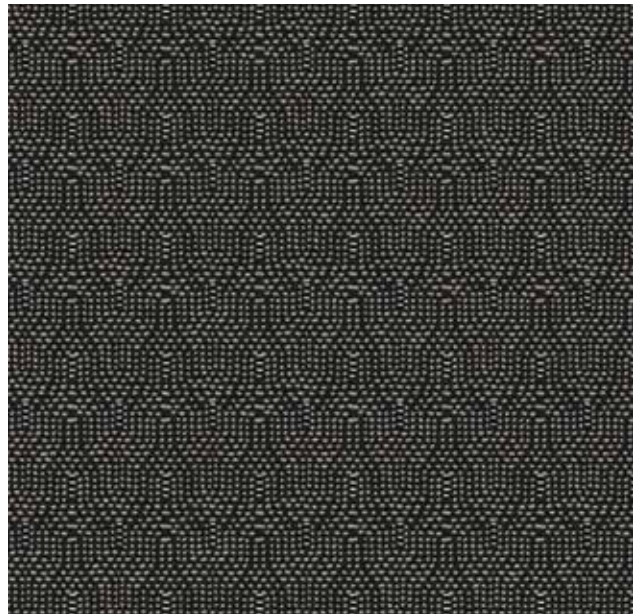
3249905 - 8803



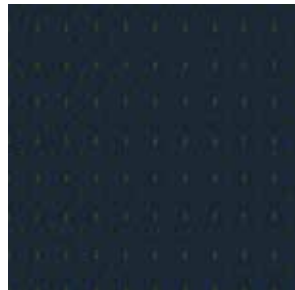
3249905 - 5504



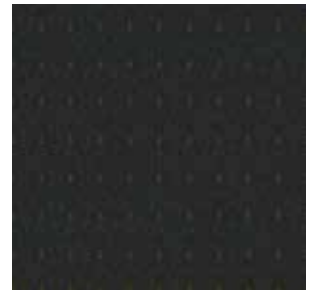
3252305 - 3500



3252305 - 3201



3252305 - 3807



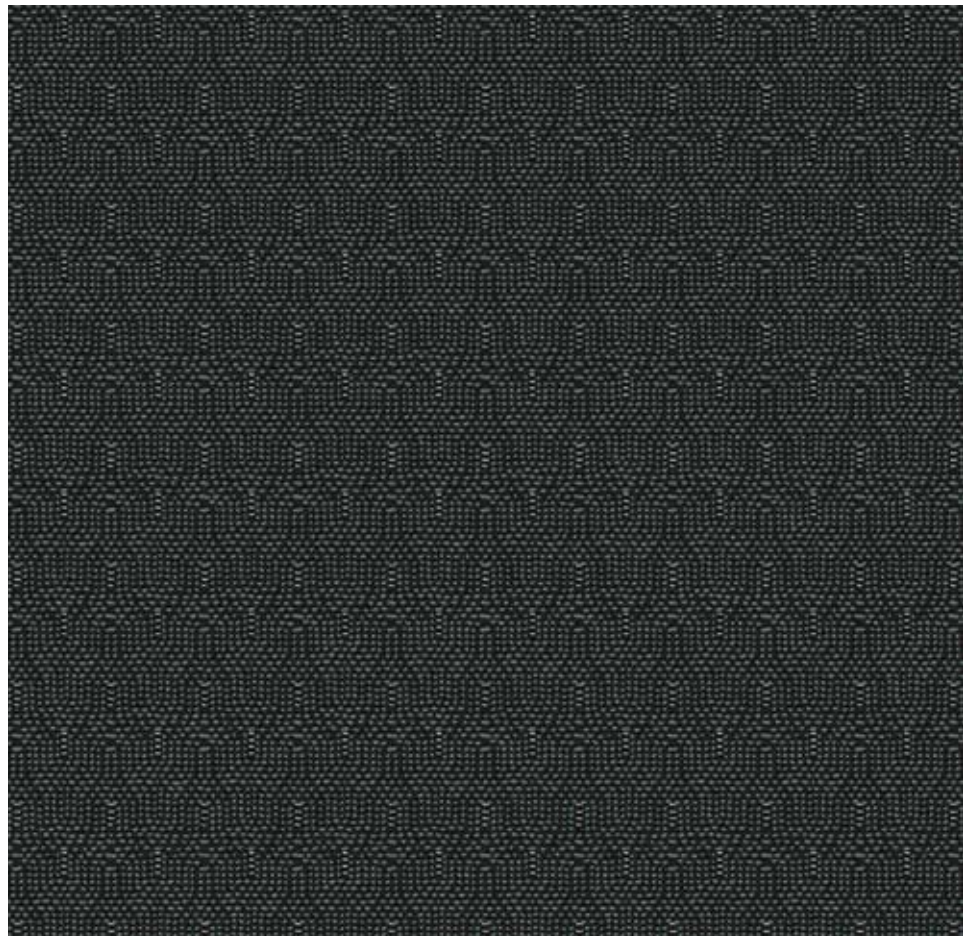
3252305 - 3970



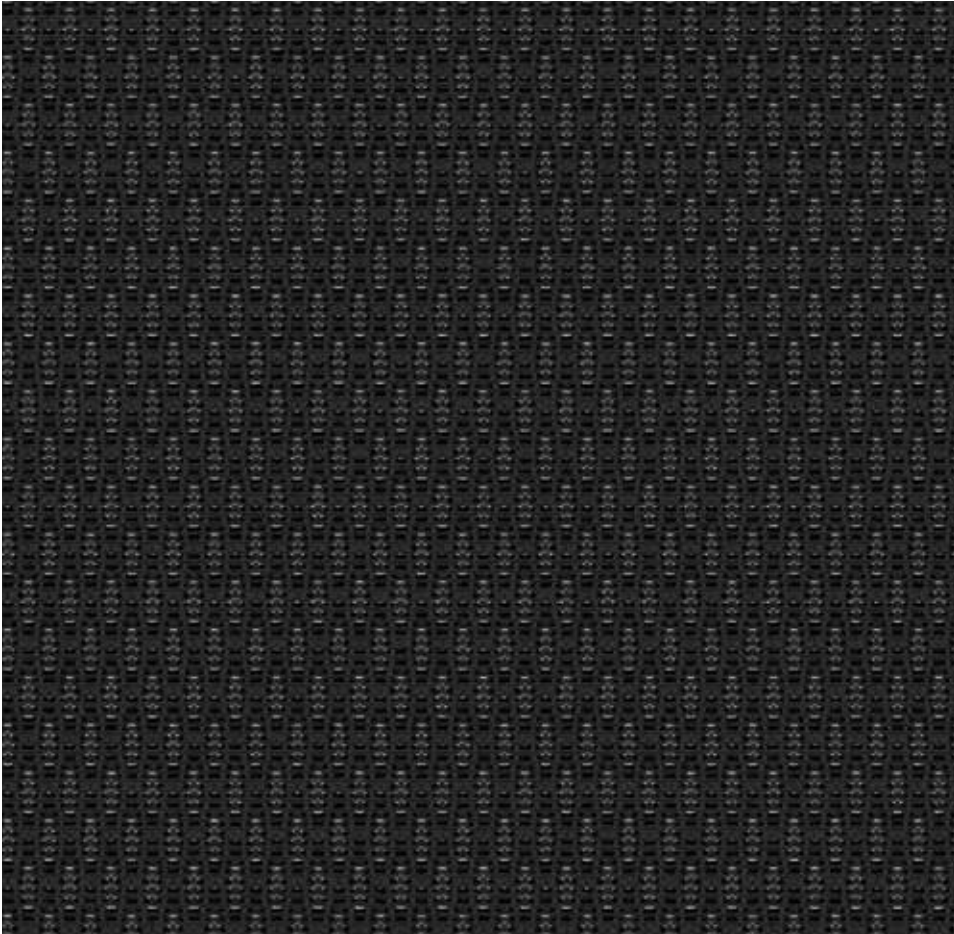
3252305 - 3801



3252305 - 3501



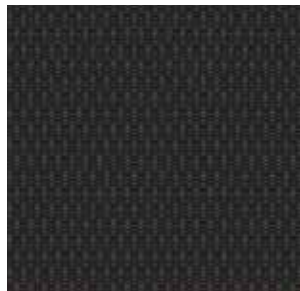
3252305 - 3610



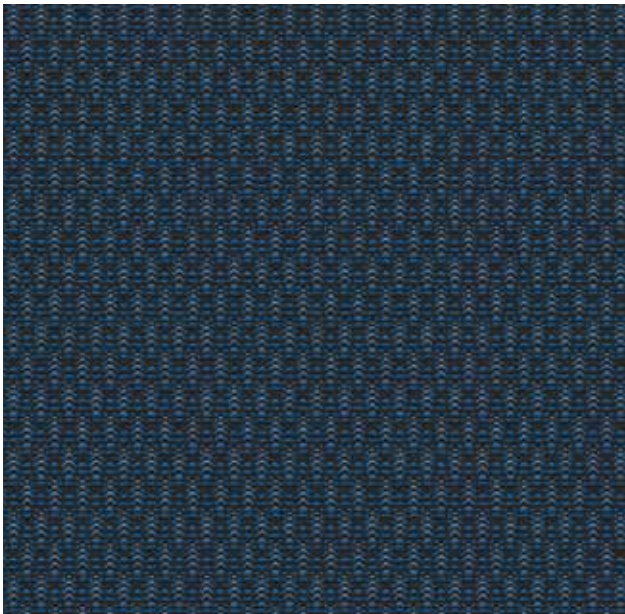
3252405 - 3010



3252405 - 3907



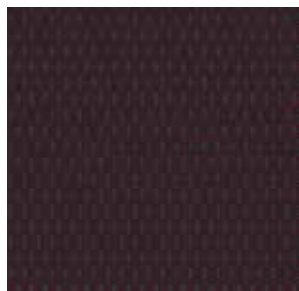
3252405 - 3018



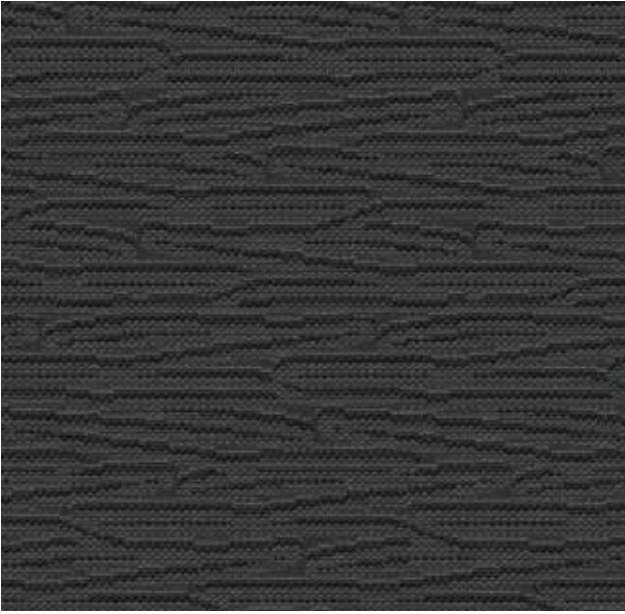
3252405 - 3810



3252405 - 3800



3252405 - 3905



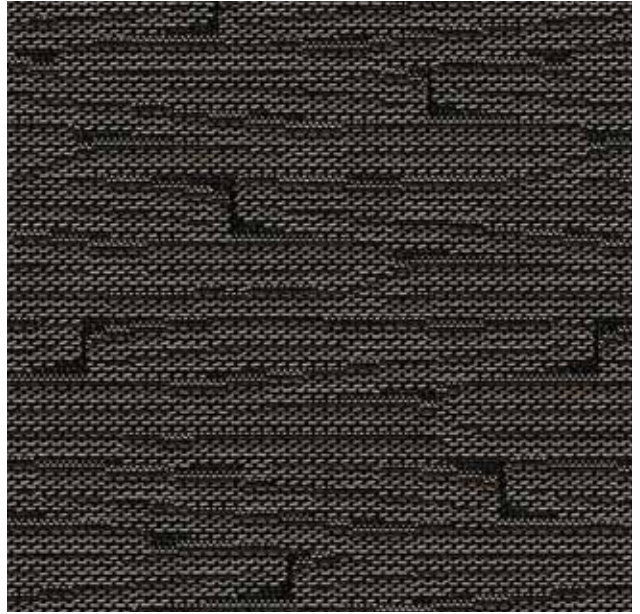
3252505 - 3011



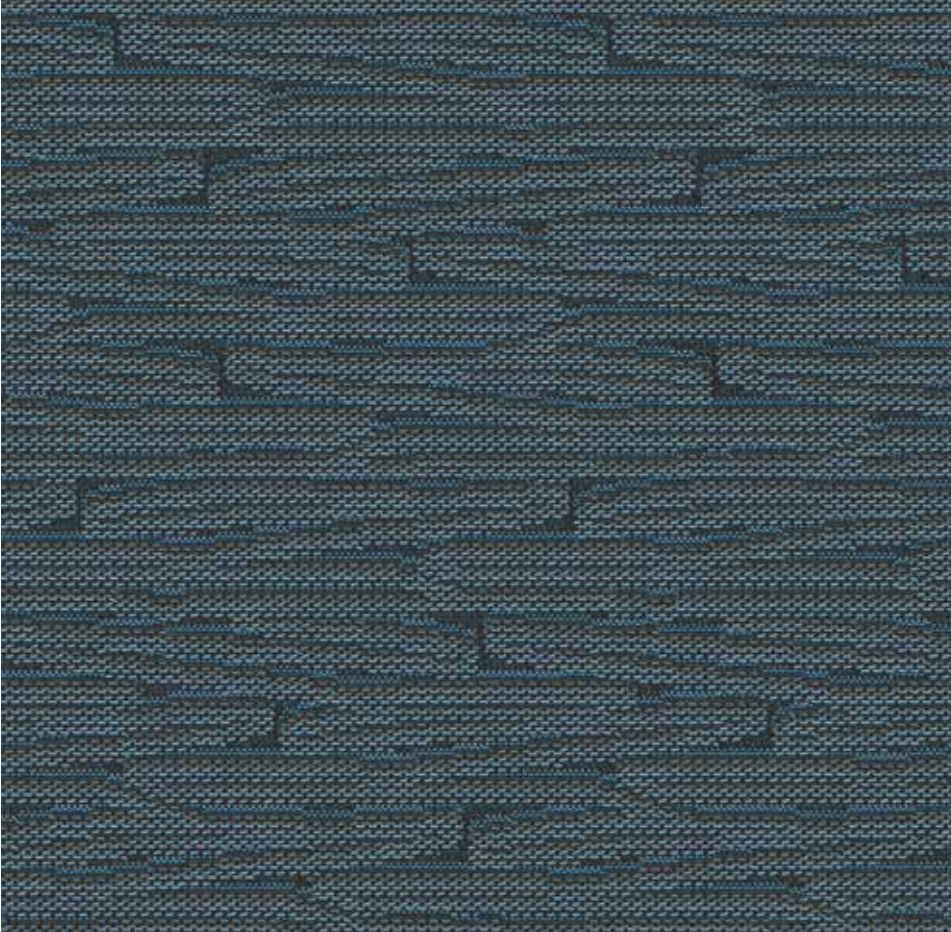
3252505 - 3505



3252505 - 3600



3252505 - 3202



3252505 - 3803



3252505 - 3880



3252505 - 3101



3252605 - 3808



3252605 - 3672



3252605 - 3571



3252605 - 3211

**Technische Daten: Leander W**

Material/Nutzschicht: Polyester / Polyamid
Breite: 153 cm
Scheuertouren
(DIN EN ISO 12947-2):
mind. 50.000 Touren
Heißlichtechtheit
(DIN EN ISO 105-B06):
Note 7 (theor. Höchstwert = 8).
**Brandprüfung gemäß der neuen
ECE Regelung Nr. 118:03.**

Haben Sie Fragen zur neuen ECE Regelung
Nr. 118:03? Wir helfen gerne weiter.

Auf Wunsch auch mit unserer **Anti-Schmutz-
Ausrüstung (ASA)** lieferbar.

Mögliche Farbabweichungen in den Abbildungen
sind drucktechnisch bedingt. Bitte fordern Sie
bei Bedarf Original-Stoffmuster an.

Technical information: Leander W

Material/Pile: Polyester / Polyamide
Width: 153 cm
Abrasion resistance
(DIN EN ISO 12947-2):
min. 50.000 rubs
Light-fastness
(DIN EN ISO 105-B06):
value 7 (theor. highest value = 8).
**Flammability test according to the
new ECE regulation No. 118:03.**

Do you have any questions about the new ECE
regulation No. 118:03? If you have any further
questions please do not hesitate to contact us.

Upon request with special **Anti-Soil treatment
(ASA)**.

Due to the printing process colours might differ
slightly. On request we gladly will supply fabric
samples.

Données techniques: Leander W

Matériau/poil: polyester / polyamid
Largeur: 153 cm
Résistance à l'abrasion
(DIN EN ISO 12947-2):
au moins 50.000 tours
Résistance à l'exposition intensive
à la lumière (DIN EN ISO 105-B06):
noté 7 (valeur maximale théorique = 8).
**L'épreuve du feu selon le
nouveau règlement ECE n° 118:03.**

Avez-vous des questions concernant
le nouveau règlement ECE n° 118:03?
Nous serons heureux de vous aider.

Sur demande, nos tissus vous sont livrés
avec protection **antitaches ASA**.

Pour des raisons d'impression, les couleurs dans
les illustrations peuvent diverger légèrement du
ton original. Demandez nous un échantillon de
tissu original en cas de besoin.

E. Schoepf GmbH
Rathausstraße 18 · DE-95236 Stammbach
Tel.: +49 (0) 92 56 80 0 · Fax: +49 (0) 92 56 80 72
info@e-schoepf.de · www.e-schoepf.de