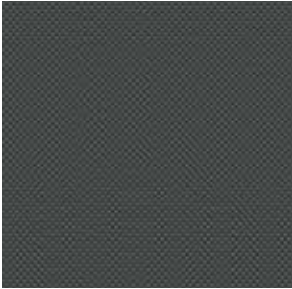


Schoepf
Shaping the Future of Fabrics



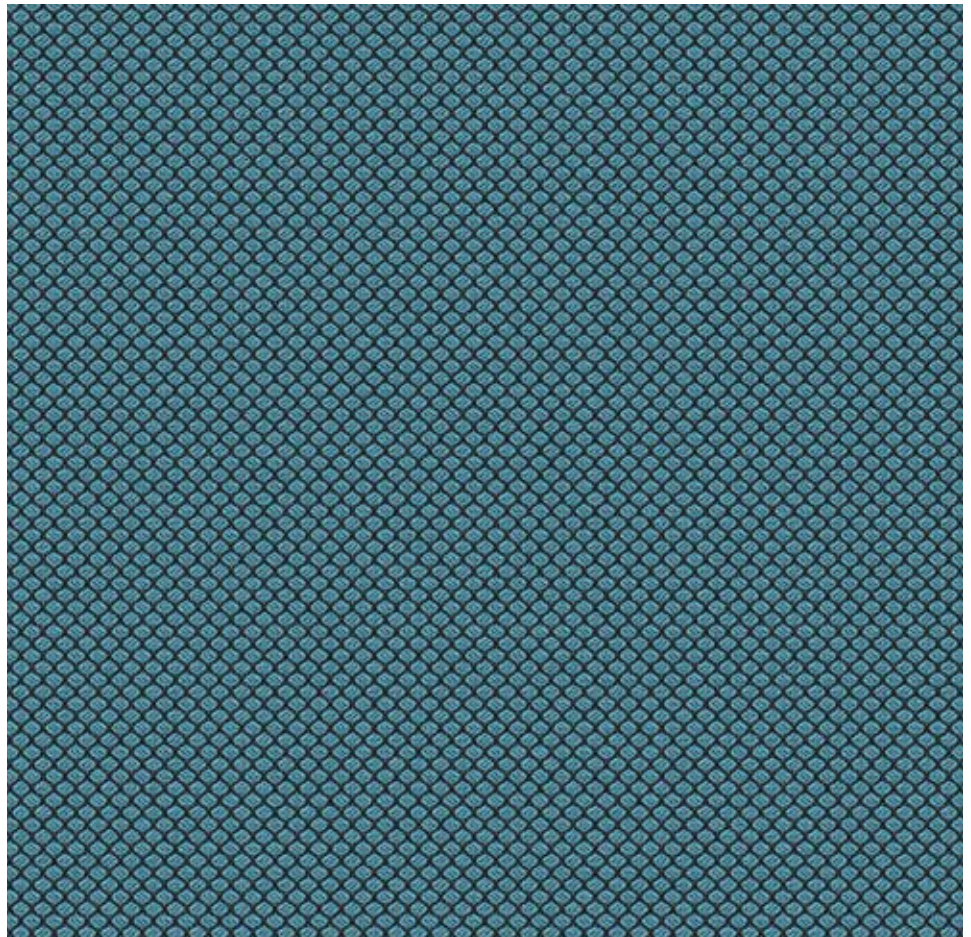
LEON



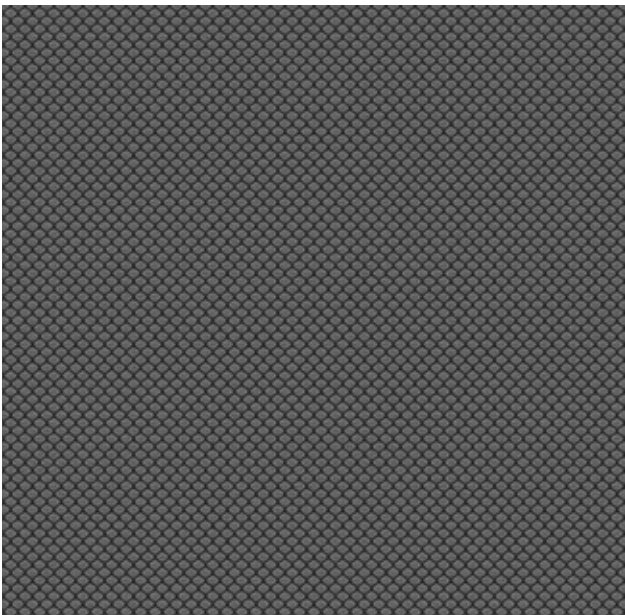
3252705 - 3066



3252705 - 5030



3252705 - 8087



3252705 - 2030



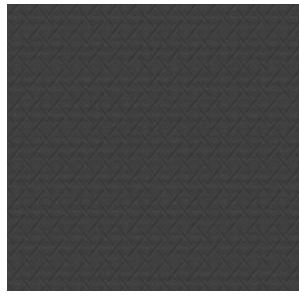
3252705 - 8083



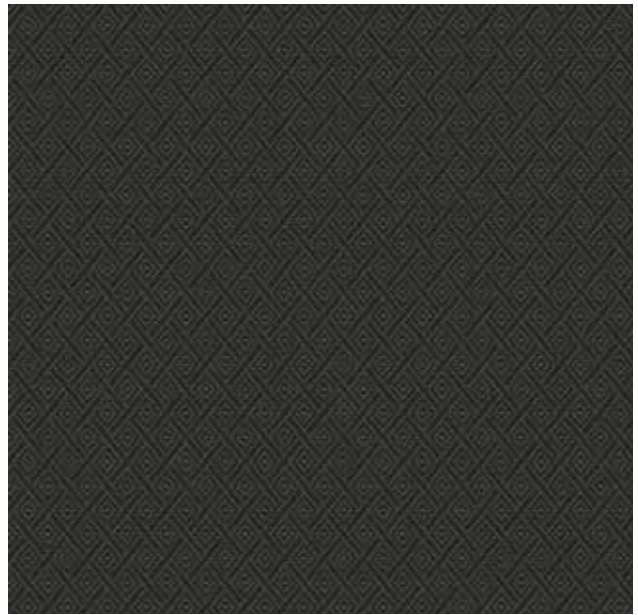
3252705 - 1000



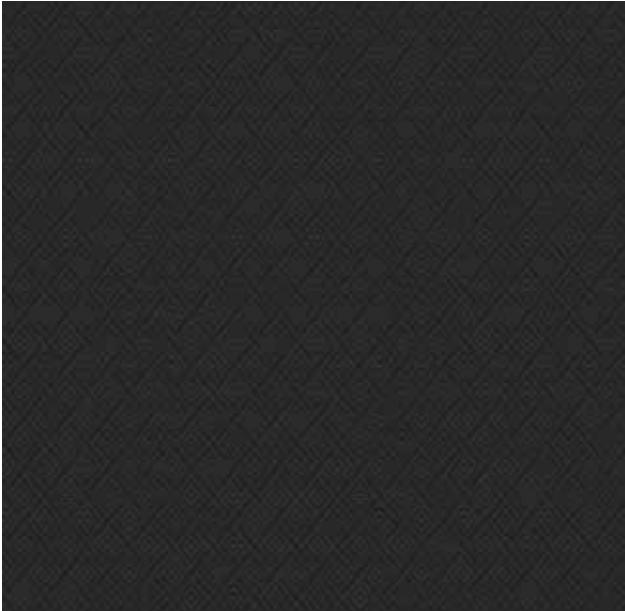
3252705 - 8080



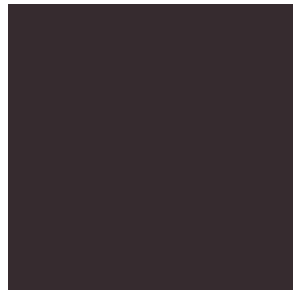
3252905 - 3630



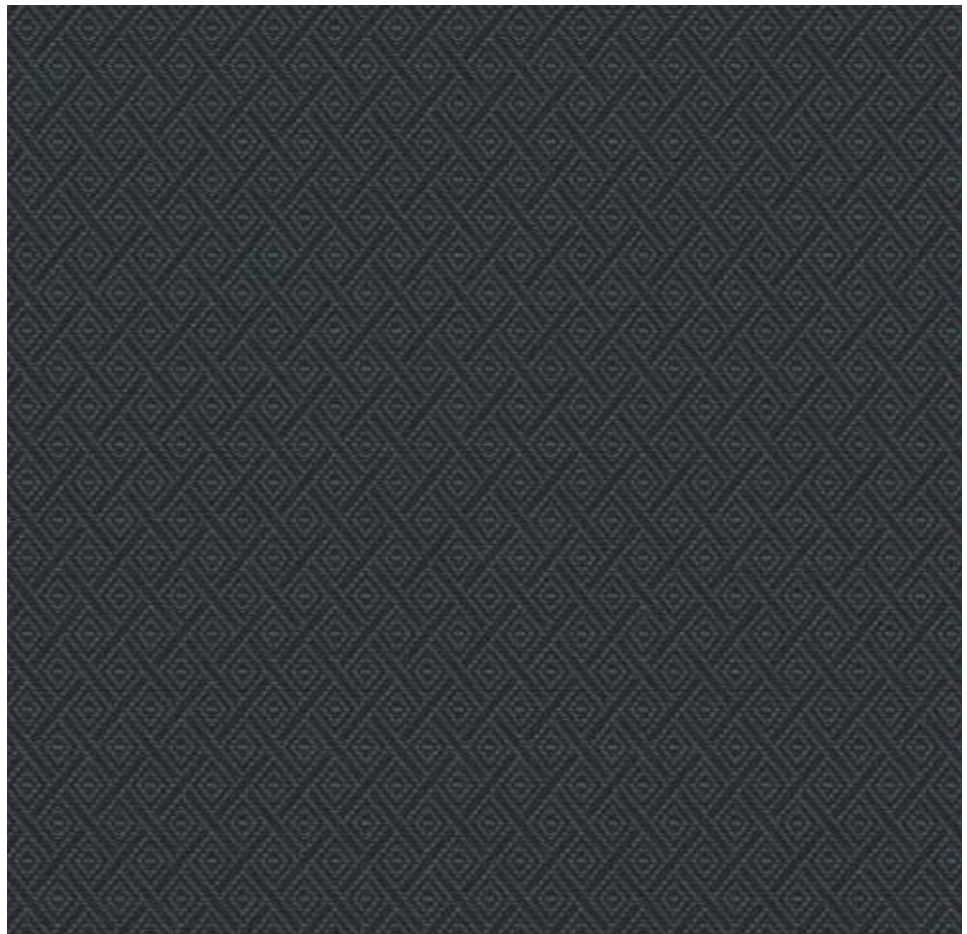
3252905 - 3070



3252905 - 3111



3252905 - 3535



3252905 - 3608



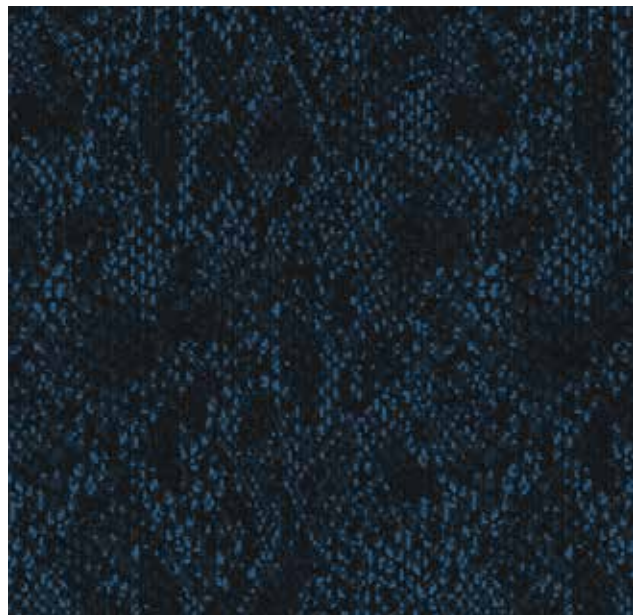
3252005 - 3505



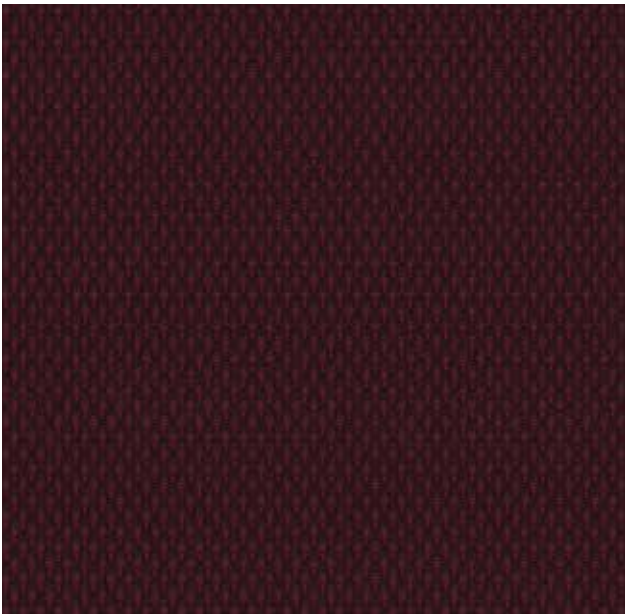
3252005 - 3600



3252005 - 3888



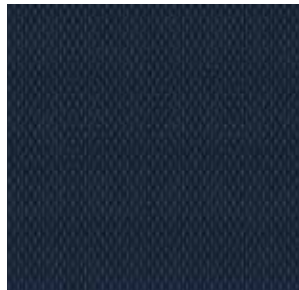
3252005 - 3880



3251905 - 3500



3251905 - 3201



3251905 - 3800



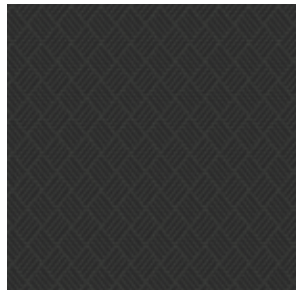
3251905 - 3802



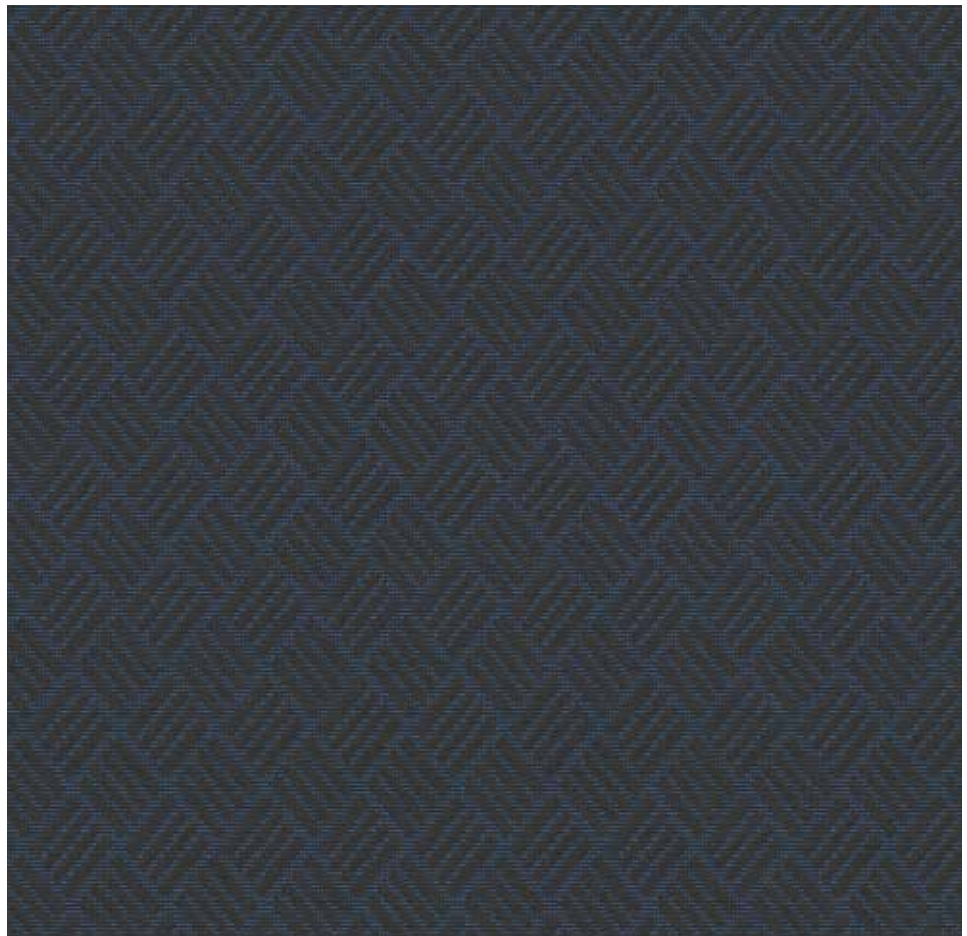
3252805 - 3608



3252805 - 3535



3252805 - 3633



3252805 - 3688

**Technische Daten: Leon Z**

Material/Nutzschicht: Polyester
Breite: 153 cm
Scheuertouren
(DIN EN ISO 12947-2):
mind. 50.000 Touren
Heißlichtechtheit
(DIN EN ISO 105-B06):
Note 7 (theor. Höchstwert = 8).
**Brandprüfung gemäß der neuen
ECE Regelung Nr. 118:03.**

Haben Sie Fragen zur neuen ECE Regelung
Nr. 118:03? Wir helfen gerne weiter.

Auf Wunsch auch mit unserer **Anti-Schmutz-
Ausrüstung (ASA)** lieferbar.

Mögliche Farbabweichungen in den Abbildungen
sind drucktechnisch bedingt. Bitte fordern Sie
bei Bedarf Original-Stoffmuster an.

Technical information: Leon Z

Material/Pile: Polyester
Width: 153 cm
Abrasion resistance
(DIN EN ISO 12947-2):
min. 50.000 rubs
Light-fastness
(DIN EN ISO 105-B06):
value 7 (theor. highest value = 8).
**Flammability test according to the
new ECE regulation No. 118:03.**

Do you have any questions about the new ECE
regulation No. 118:03? If you have any further
questions please do not hesitate to contact us.

Upon request with special **Anti-Soil treatment
(ASA)**.

Due to the printing process colours might differ
slightly. On request we gladly will supply fabric
samples.

Données techniques: Leon Z

Matériau/poil: polyester
Largeur: 153 cm
Résistance à l'abrasion
(DIN EN ISO 12947-2):
au moins 50.000 tours
Résistance à l'exposition intensive
à la lumière (DIN EN ISO 105-B06):
noté 7 (valeur maximale théorique = 8).
**L'épreuve du feu selon le
nouveau règlement ECE n° 118:03.**

Avez-vous des questions concernant
le nouveau règlement ECE n° 118:03?
Nous serons heureux de vous aider.

Sur demande, nos tissus vous sont livrés
avec protection **antitaches ASA**.

Pour des raisons d'impression, les couleurs dans
les illustrations peuvent diverger légèrement du
ton original. Demandez nous un échantillon de
tissu original en cas de besoin.

E. Schoepf GmbH
Rathausstraße 18 · DE-95236 Stammbach
Tel.: +49 (0) 92 56 80 0 · Fax: +49 (0) 92 56 80 72
info@e-schoepf.de · www.e-schoepf.de