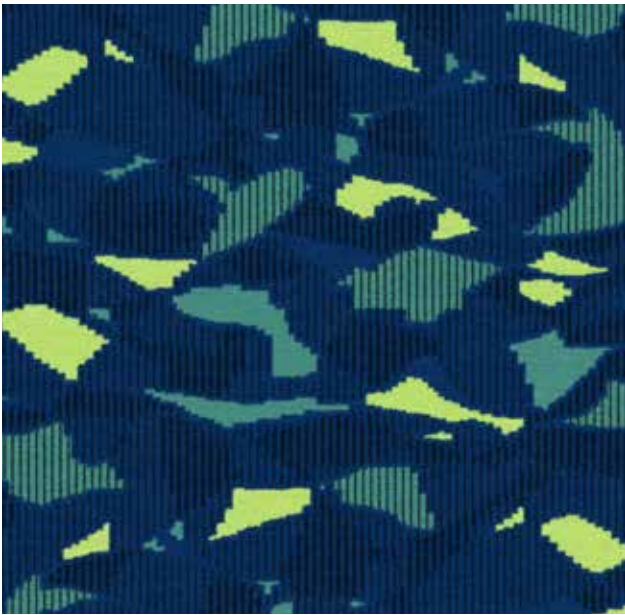


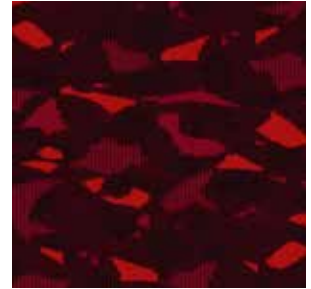
SAMBA



3422125 - 837



3422125 - 863



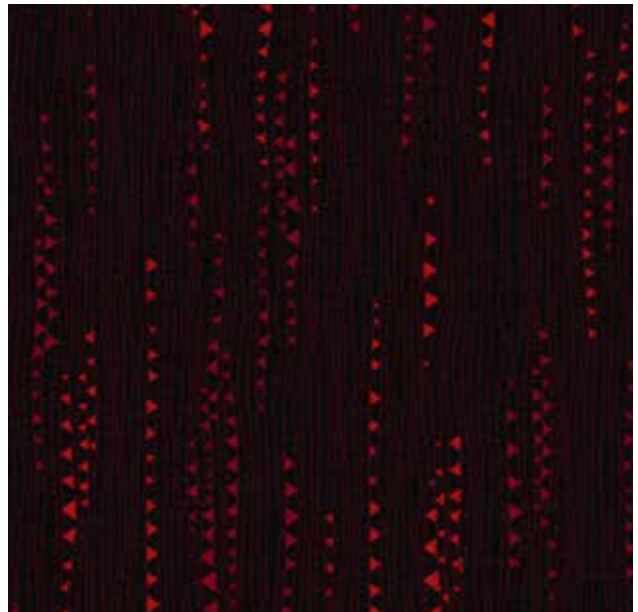
3422125 - 563



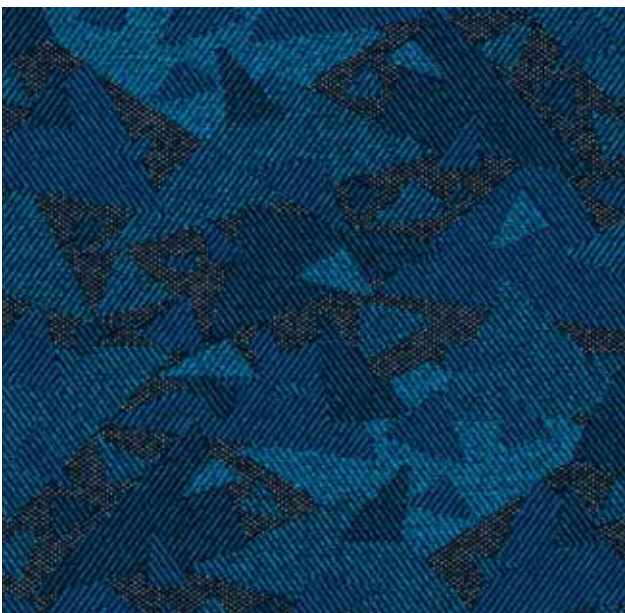
3422135 - 863



3422135 - 837



3422135 - 563



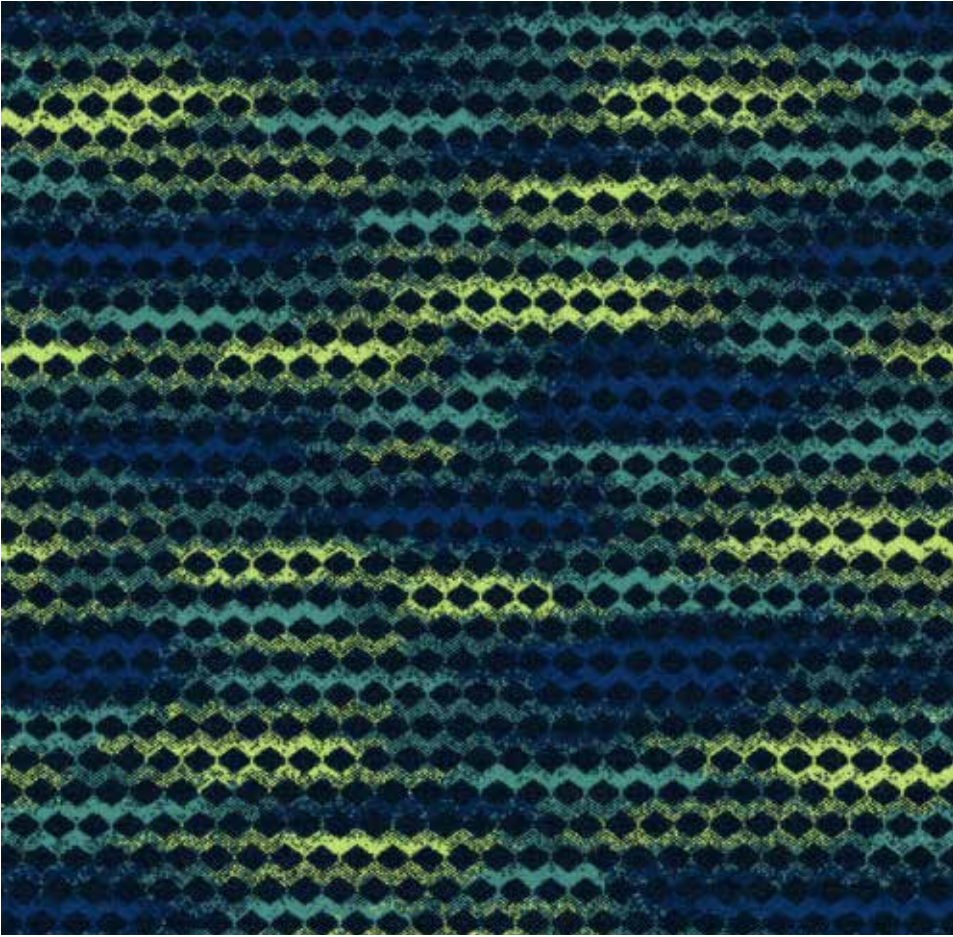
3422195 - 863



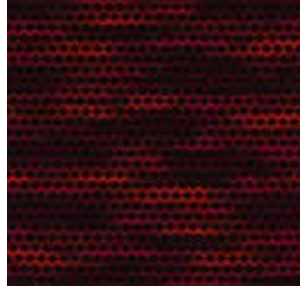
3422195 - 563



3422195 - 837



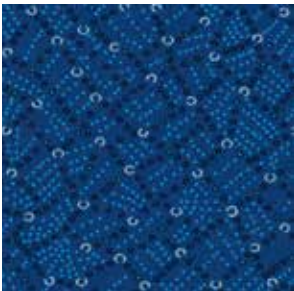
3422095 - 837



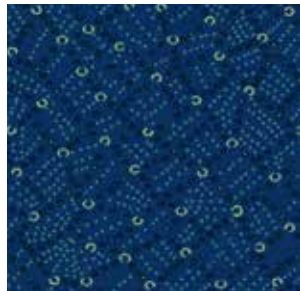
3422095 - 563



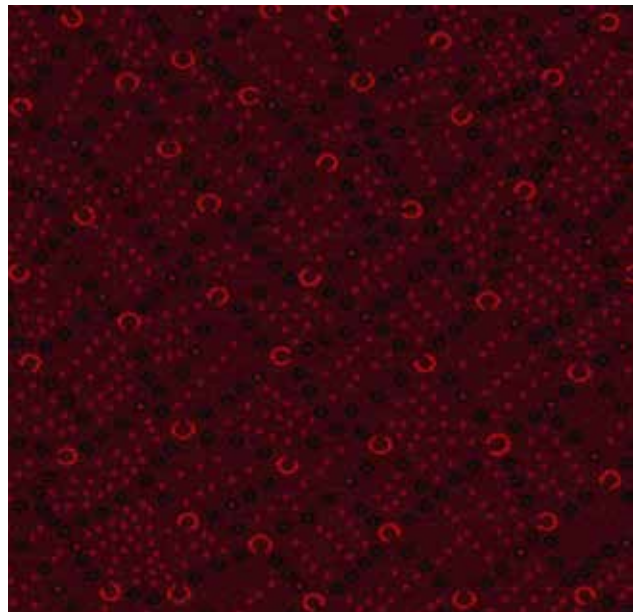
3422095 - 863



3421665 - 863



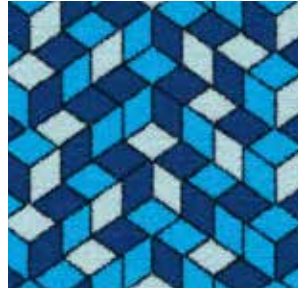
3421665 - 837



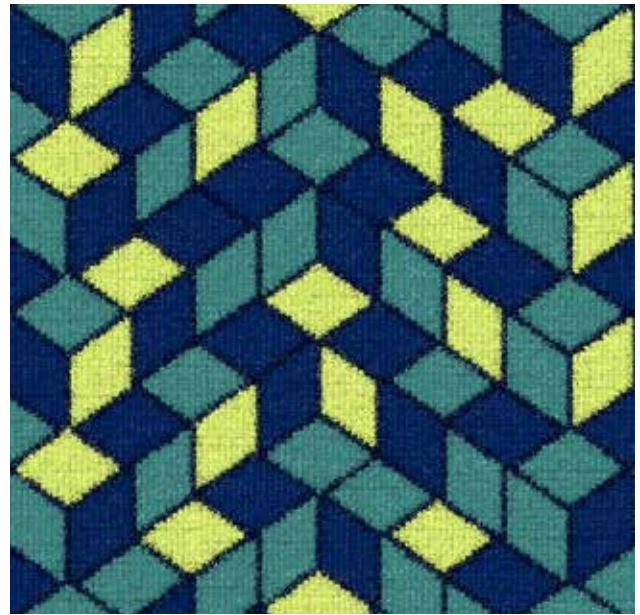
3421665 - 563



3422185 - 563



3422185 - 863



3422185 - 837



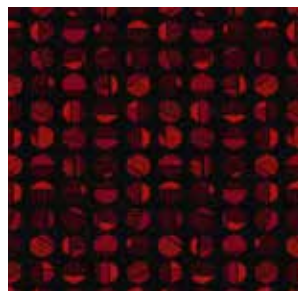
3422145 - 563



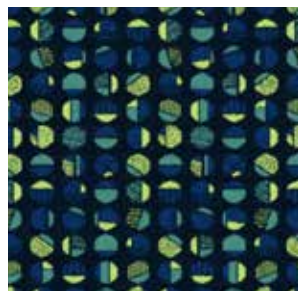
3422145 - 863



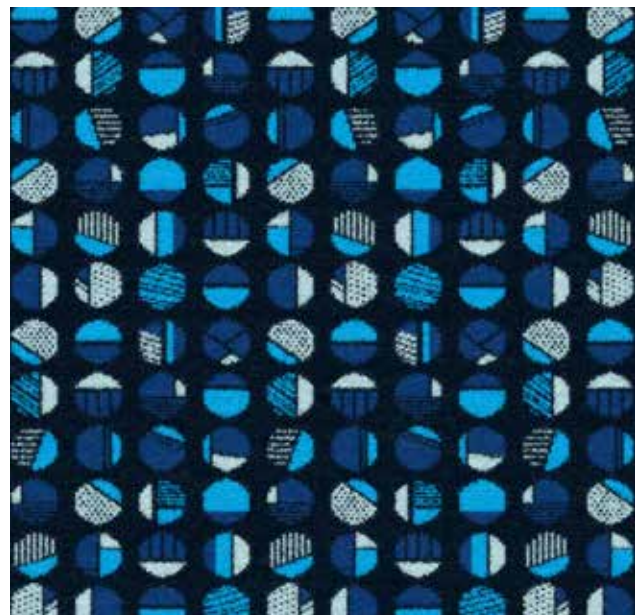
3422145 - 837



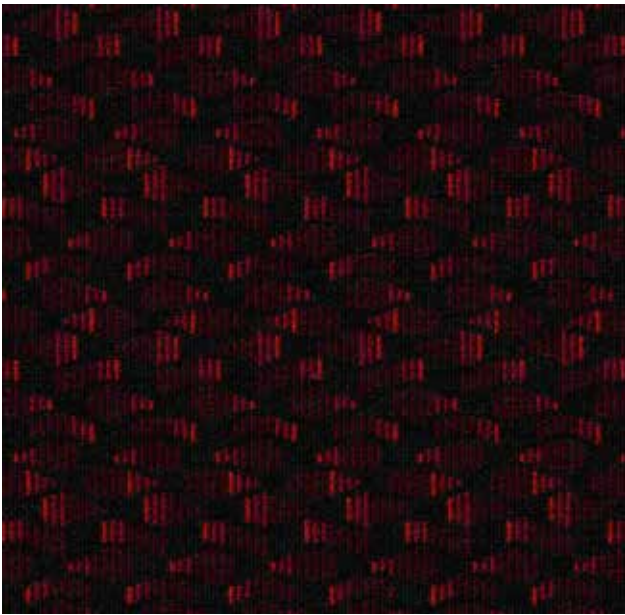
3422165 - 563



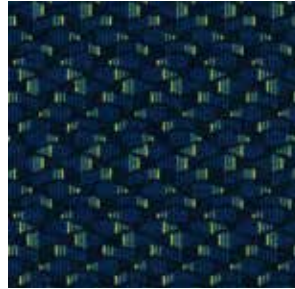
3422165 - 837



3422165 - 863



3422155 - 563



3422155 - 837



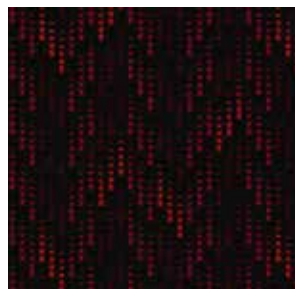
3422155 - 863



3422115 - 863



3422115 - 837



3422115 - 563

**Technische Daten: Samba B**

Material/Nutzschicht: Polyester
Breite: 156 cm
Scheuertouren
(DIN EN ISO 12947-2):
mind. 70.000 Touren
Heißlichtechtheit
(DIN EN ISO 105-B06):
Note 6-7 (theor. Höchstwert = 8).

**Brandprüfung gemäß der neuen
ECE Regelung Nr. 118:03.**

Haben Sie Fragen zur neuen ECE Regelung
Nr. 118:03? Wir helfen gerne weiter.

Auf Wunsch auch mit unserer **Anti-Schmutz-
Ausrüstung (ASA)** lieferbar.

Mögliche Farbabweichungen in den Abbildungen
sind drucktechnisch bedingt. Bitte fordern Sie
bei Bedarf Original-Stoffmuster an.

Technical information: Samba B

Material/Pile: Polyester
Width: 156 cm
Abrasion resistance
(DIN EN ISO 12947-2):
min. 70.000 rubs
Light-fastness
(DIN EN ISO 105-B06):
value 6-7 (theor. highest value = 8).

**Flammability test according to the
new ECE regulation No. 118:03.**

Do you have any questions about the new ECE
regulation No. 118:03? If you have any further
questions please do not hesitate to contact us.

Upon request with special **Anti-Soil treatment
(ASA)**.

Due to the printing process colours might differ
slightly. On request we gladly will supply fabric
samples.

Données techniques: Samba B

Matériau/poil: polyester
Largeur: 156 cm
Résistance à l'abrasion
(DIN EN ISO 12947-2):
au moins 70.000 tours
Résistance à l'exposition intensive
à la lumière (DIN EN ISO 105-B06):
noté 6-7 (valeur maximale théorique = 8).

**L'épreuve du feu selon le
nouveau règlement ECE n° 118:03.**

Avez-vous des questions concernant
le nouveau règlement ECE n° 118:03?
Nous serons heureux de vous aider.

Sur demande, nos tissus vous sont livrés
avec protection **antitaches ASA**.

Pour des raisons d'impression, les couleurs dans
les illustrations peuvent diverger légèrement du
ton original. Demandez nous un échantillon de
tissu original en cas de besoin.

E. Schoepf GmbH
Rathausstraße 18 · DE-95236 Stammbach
Tel.: +49 (0) 92 56 80 0 · Fax: +49 (0) 92 56 80 72
info@e-schoepf.de · www.e-schoepf.de