

Schoepf
Shaping the Future of Fabrics



UNI

VICTORIA

3156105 - ...



103



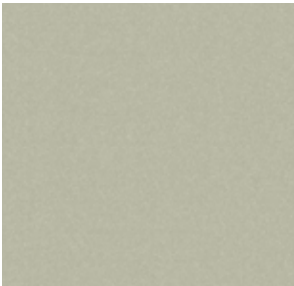
109



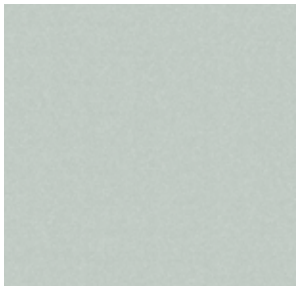
177



199



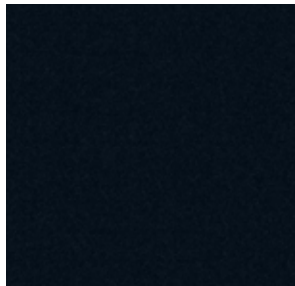
209



301



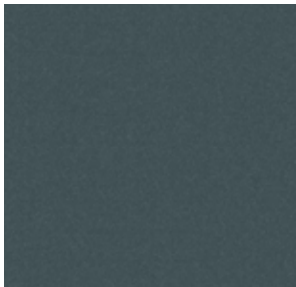
305



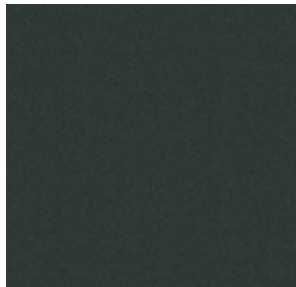
310



334



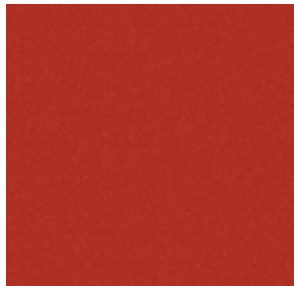
339



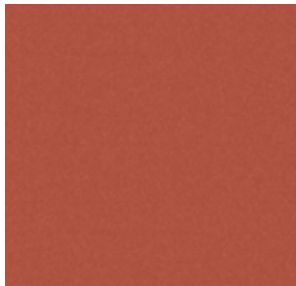
344



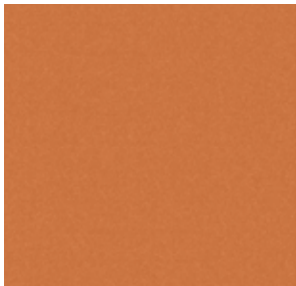
372



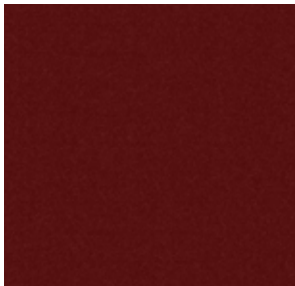
400



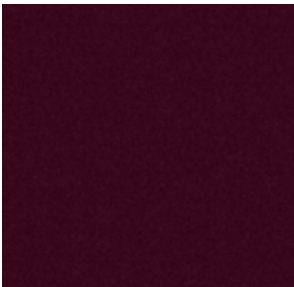
401



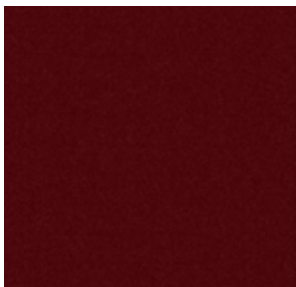
405



440



446



505



513



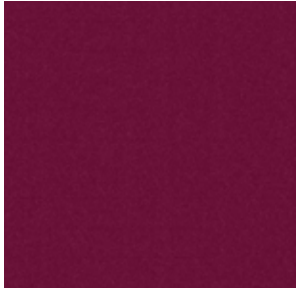
547

VICTORIA

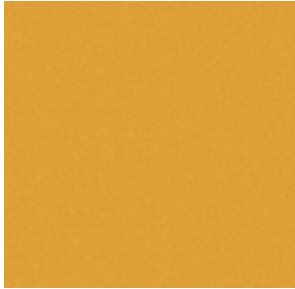
3156105 - ...



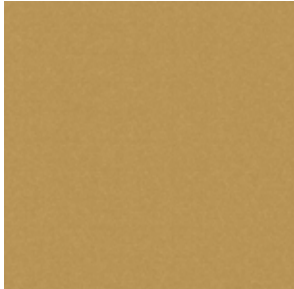
567



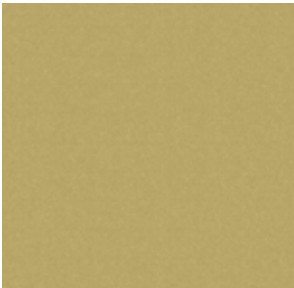
585



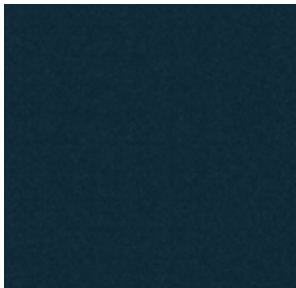
700



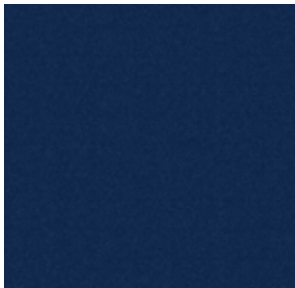
770



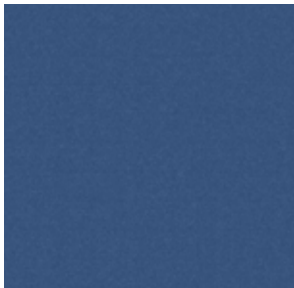
780



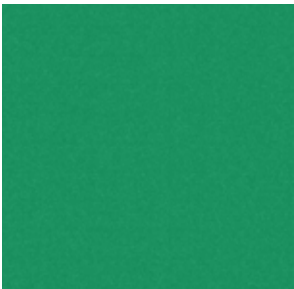
800



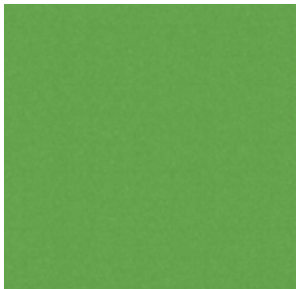
881



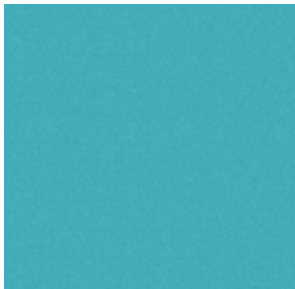
896



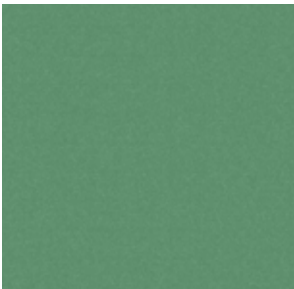
902



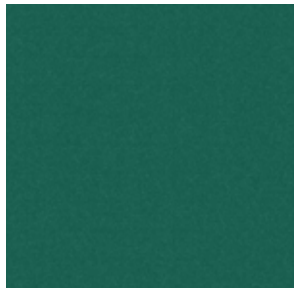
906



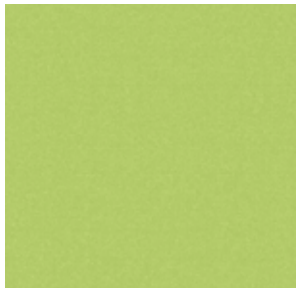
907



964



993



995

DAGNY

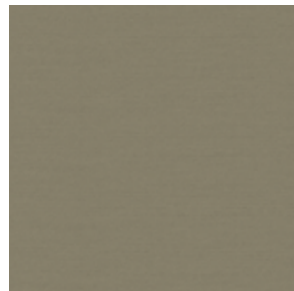
3156802 - ...



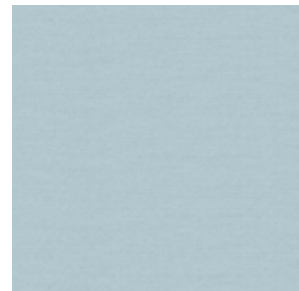
202



211



265



303



304



306

VARONE

3154505 - ...



222



314



399



517



881



883



Uni Stoffe lassen sich ausgezeichnet verarbeiten und haben während ihrer Entwicklung alle Belastungstests unseres Hauses durchlaufen. Das Ergebnis sind Stoffe mit außerordentlicher Strapazierfähigkeit, hoher Lebensdauer und sehr guten Pflege- und Reinigungseigenschaften. Typisch Schoepf eben.

Technische Daten:

Varone A / Victoria A / Dagny A

Material/Nutzschicht: Polyester

Breite: Varone 153 cm / Victoria 153 cm / Dagny 140 cm

Scheuertouren

(DIN EN ISO 12947-2):

mind. 70.000 Touren

Heißlichtechtheit (DIN EN ISO 105-B06):

Note 6-7 (theor. Höchstwert = 8)

Brandprüfung gemäß der neuen

ECE Regelung Nr. 118:03.

Haben Sie Fragen zur neuen ECE Regelung Nr. 118:03? Wir helfen gerne weiter.

Auf Wunsch auch mit unserer **Anti-Schmutz-Ausrüstung (ASA)** lieferbar.

Sollten Sie Ihre Wunschfarbe in unseren Kollektionen nicht finden, so wird unsere haus-eigene Färberei diese gerne für Sie umsetzen.

Mögliche Farbabweichungen in den Abbildungen sind drucktechnisch bedingt. Bitte fordern Sie bei Bedarf Original-Stoffmuster an.

Uni fabrics are easily to work with and have undergone all in-house quality tests during their development. This has resulted in fabrics with extraordinary durability, a long lifespan and excellent care and cleaning properties. Just typical of Schoepf.

Technical information:

Varone A / Victoria A / Dagny A

Material/Pile: Polyester

Width: Varone 153 cm / Victoria 153 cm / Dagny 140 cm

Abrasion resistance

(DIN EN ISO 12947-2):

min. 70.000 rubs

Light-fastness (DIN EN ISO 105-B06):

value 6-7 (theor. highest value = 8)

Flammability test according to the

new ECE regulation No. 118:03.

Do you have any questions about the new ECE regulation No. 118:03? If you have any further questions please do not hesitate to contact us.

Upon request with special **Anti-Soil treatment (ASA)**.

In case you are unable to find your desired colour in our collection, then we will create it for you in our own dye house.

Due to the printing process colours might differ slightly. On request we gladly will supply fabric samples.

Les **tissus unis** se travaillent remarquablement bien et ont passé tous les tests de résistance internes durant leur développement. Le résultat, ce sont des tissus qui séduisent par une extrême résistance à l'usure, une longue durabilité et des propriétés d'entretien et de nettoyage excellentes. Typiquement Schoepf évidemment.

Données techniques:

Varone A / Victoria A / Dagny A

Matériau/poil: polyester

Largeur: Varone 153 cm / Victoria 153 cm / Dagny 140 cm

Résistance à l'abrasion

(DIN EN ISO 12947-2):

au moins 70.000 tours

Résistance à l'exposition intensive à la lumière

(DIN EN ISO 105-B06):

noté 6-7 (valeur maximale théorique = 8)

L'épreuve du feu selon le nouveau règlement ECE n° 118:03.

Avez-vous des questions concernant le nouveau règlement ECE n° 118:03? Nous serons heureux de vous aider.

Sur demande, nos tissus vous sont livrés avec protection **antitaches ASA**.

Si vous ne trouvez pas votre couleur de choix dans notre collection, notre teinturerie interne la réalisera pour vous.

Pour des raisons d'impression, les couleurs dans les illustrations peuvent diverger légèrement du ton original. Demandez nous un échantillon de tissu original en cas de besoin.

E. Schoepf GmbH
Rathausstraße 18 · DE-95236 Stambach
Tel.: +49 (0) 92 56 80 0 · Fax: +49 (0) 92 56 80 72
info@e-schoepf.de · www.e-schoepf.de